



# STOCKLINE

EQUIPMENT

*Built for the Herd*

FORMERLY KNOWN AS **LH** LIVESTOCK EQUIPMENT



# 2026 PRODUCT CATALOG





# VERSA TOTES

- > Quick ROI with bulk versus bagged feed savings
- > Easy open slide lid
- > Weather and rodent proof construction
- > Heavy 14-gauge steel construction
- > Easy towing, low profile design
- > Heavy duty tires (8- or 10-ply depending on unit capacity)
- > Durable construction

## MOBILE

MODEL	CAPACITY	HEIGHT	WIDTH	LENGTH	WEIGHT
99163	3,000 LBS	6'6"	6'9"	8'2"	780 LBS
99164	5,000 LBS	8'	6'9"	8'2"	860 LBS
99170	6,500 LBS	9'3"	6'9"	8'2"	1,100 LBS

## STATIONARY

MODEL	CAPACITY	HEIGHT	WIDTH	LENGTH	WEIGHT
99165	3,000 LBS	6'6"	5'	5'	580 LBS
99166	5,000 LBS	8'	5'	5'	660 LBS
99167	6,500 LBS	9'3"	5'	5'	900 LBS





# CREEP FEEDERS

- > L-H creep feeders can feed up to approximately 75 head of cattle
- > Heavy duty construction: 12 gauge steel feed trough with feed saver lip
- > Extra heavy, 7,000 lb. axle
- > Easy lock down - lock up large adjustable creep fences, with weather guard panels
- > Four leveling stands must be used during feeding
- > Easy ground opening full length lid
- > 2000 lb. screw jack - to raise and lower feeder only
- > Easy adjustable feed flow gates
- > Rear hitch and 16" tires



## MOBILE & STATIONARY

MODEL	CAPACITY	HEIGHT	WIDTH	LENGTH	WEIGHT	FENCE
99109 / 99110	90 BUSHEL	7'6"	7'	6'	1,050 LBS	6' x 6' (6' TOTAL FEEDER)
99173 / 99169	120 BUSHEL	7'6"	7'	6'	1,500 LBS	6' x 6' (12' TOTAL FEEDER)
99145 / 99144	160 BUSHEL	7'6"	7'	8'	1,680 LBS	6' x 8' (16' TOTAL FEEDER)

# FEED BUNKS

## GRAIN BUNKS

MODEL	LENGTH	WIDTH	HEIGHT	DEPTH	WEIGHT
99158	8'	26"	24"	8"	150 LBS
99159	16'	26"	24"	8"	285 LBS



## SILAGE BUNKS

MODEL	LENGTH	WIDTH	HEIGHT	DEPTH	WEIGHT
99155	8'	30"	24"	12"	180 LBS
99156	16'	30"	24"	12"	355 LBS

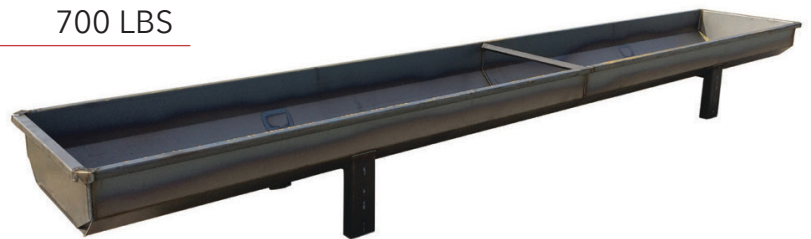
- > Flat bottom easy for cleaning
- > Completely constructed of 14 gauge steel
- > Designed for convenient stacking, storing and hauling



## 10 GAUGE SILAGE BUNK

MODEL	LENGTH	WIDTH	HEIGHT	DEPTH	WEIGHT
99148	10'	30"	24"	12"	355 LBS
99147	20'	34"	26"	12"	700 LBS

- > 45 degree taper in bottom of bunk
- > Lip on bunk for added strength
- > 10 gauge sheets legs 3" x 6" x 3/16" thick with plug in bottom



## 20' 10 GAUGE BOTTOMLESS BUNK

LENGTH	WIDTH	HEIGHT	WEIGHT
20'	4'	26"	750 LBS



MODEL #99178

# FEEDER WAGONS

## 12' FEEDER WAGON

WIDTH	HEIGHT	WEIGHT	TROUGH DEPTH	TROUGH HEIGHT
82"	59"	1,260 LBS	14"	28"

- > Capacity: 2 large round or 1 large square bales
- > Heavy duty construction
- > 16" spacing with hay saver bars
- > Removable tongue
- > Chopped feed liner 20-gauge galvanized (optional)
- > 12 gauge steel trough with 20 slant bar feed openings



## 20' FEEDER WAGON

WIDTH	HEIGHT	WEIGHT	TROUGH DEPTH	TROUGH HEIGHT
82"	59"	2,000 LBS	14"	28"

- > Capacity: 3 large round or 2 large square bales
- > Heavy duty construction
- > 12 gauge steel trough with 29 slant bar feed openings
- > 16" spacing with hay saver bars
- > Chopped feed liner 20-gauge galvanized (optional)



## 24' FEEDER WAGON

- > Capacity: 4 large round or 3 large square bales
- > Heavy duty construction
- > 12 gauge steel trough with 35 slant bar feed openings
- > Chopped feed liner 20-gauge galvanized (optional)



## STATIONARY

- > 12' - Model # 99162
- > 20' - Model # 99172
- > 24' - Model # 99175



# BALE FEEDERS

- > Constructed of 14 gauge, 1.5" sq. tubing
- > 18 gauge steel skirt

## SLANT BAR BALE FEEDER

HEIGHT	WEIGHT	DIAMETER
53"	195 LBS	94"



MODEL #99112

## CROWN HORSE BALE FEEDER

HEIGHT	WEIGHT	DIAMETER
54"	215 LBS	94"



MODEL #99113

# MINERAL FEEDERS

- > All feeders have 150 lb. capacity
- > No center pole in feeders
- > Heavy duty base keeps feeders from tipping

## LOW PROFILE FEEDER

- > 3/8" flexible rubber cover keeps mineral dry
- > Durable steel frame with 46" diameter base
- > Reinforced rubber tub
- > Height: 10", Weight: 43 lbs.



MODEL #99146

## DOUBLE TUB POLY FEEDER

- > Tough durable polyethylene
- > Greased sealed bearings
- > 58" diameter 14 gauge square tubing base
- > Weight: 72 lbs.
- > Dust bag and bracket available



MODEL #99104



# STOCKLINE

EQUIPMENT

*Built for the Herd*

FORMERLY KNOWN AS  LIVESTOCK EQUIPMENT



**RYAN**  
Robinson

Vice President  
Business Development

M 541.377.2303

[ryan@lhmf.com](mailto:ryan@lhmf.com)